

*Whittier*



**2024**

**Huna Totem**  
DEVELOPMENT GROUP



# HTC Team



**Russell Dick**  
President and CEO  
Huna Totem



(907) 723-9891



russell.dick@hunatotem.com



**Mickey Richardson**  
VP of Creative Development  
Huna Totem/Icy Strait Point



(907) 789-8604



mickey@hunatotem.com



**Bruce Walters**  
Construction Manager  
Huna Totem



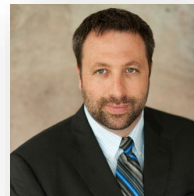
(907) 321-0023



bwalter@dpdii.com



**Robert Capps**  
President  
F&W Construction



**Jason Davis**  
President and CEO  
Turnagain Marine



**Josh Zellmer**  
Principal Engineer  
Turnagain Marine



**Huna Totem**  
DEVELOPMENT GROUP



# Summary

INCLUDED

COMING

Project Phase Review



Head of the Bay Land Ownership



Building Update

Outside Paint Color



Inside 95% Design Layout



Parking Lot and Bus Turn Layout



Dock Update



Project Timeline – To First Ship Call



Rail Spur Discussion Options



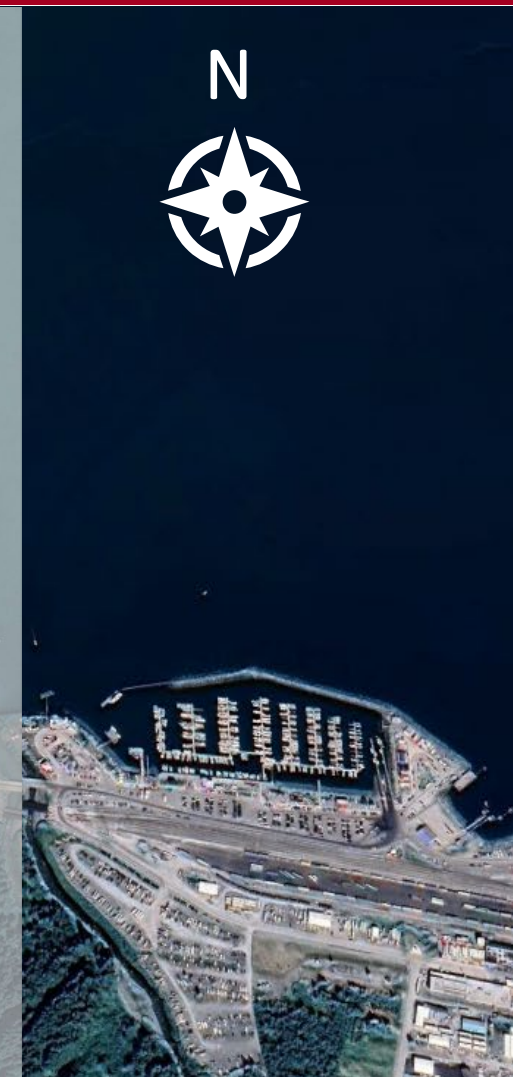
Building Permit



**Huna Totem**  
DEVELOPMENT GROUP



# Head of the Bay Concept



## ORIGINAL HEAD OF THE BAY CONCEPT AS DISCUSSED IN 2022

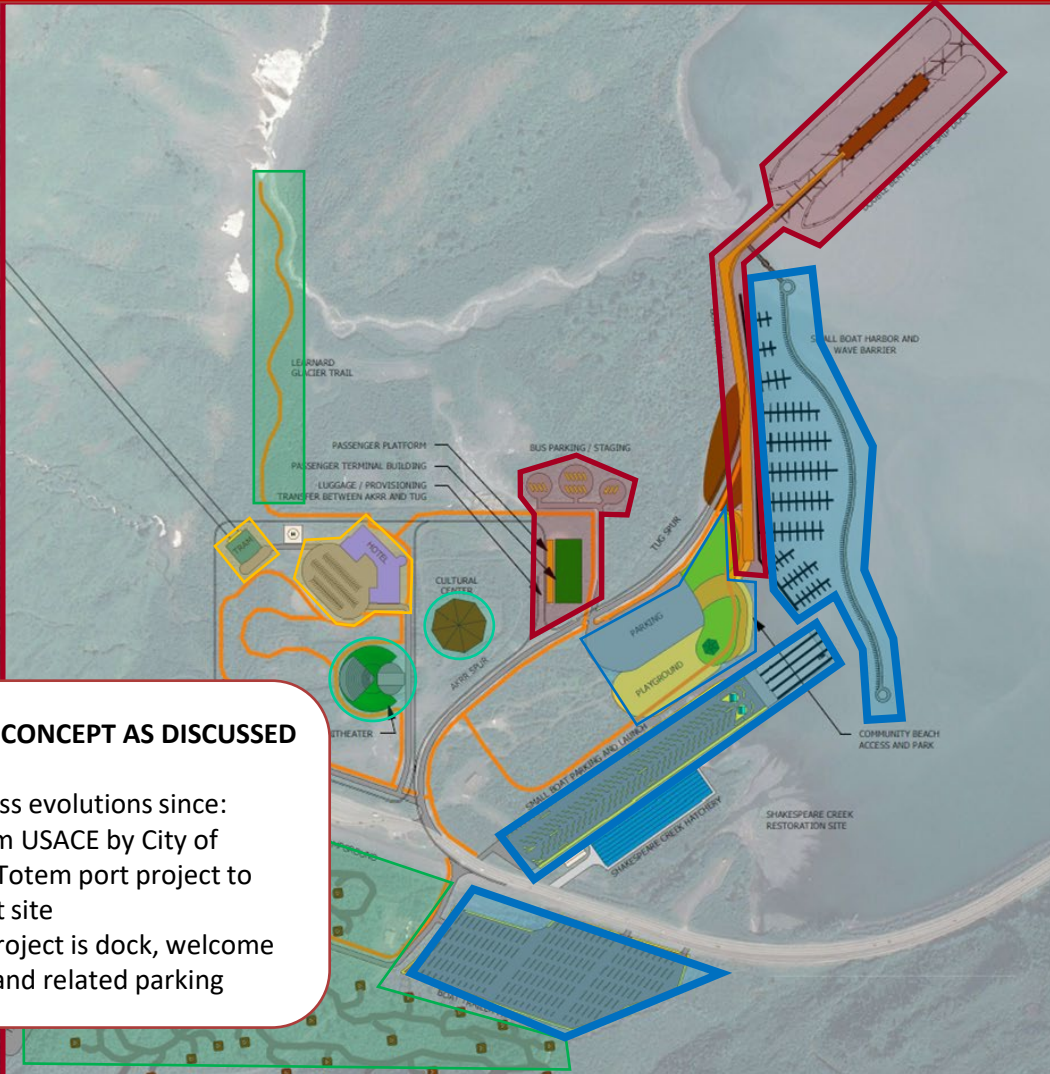
Several conceptual and process evolutions since:

- New Land acquired from USACE by City of Whittier enables Huna Totem port project to occupy a more compact site
- Focus of Huna Totem project is dock, welcome center, train platform, and related parking

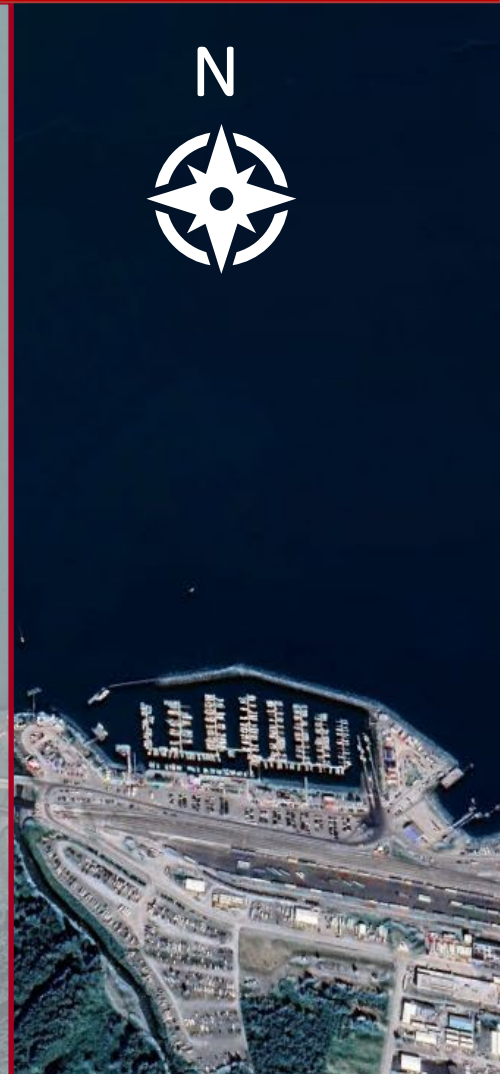
HUNA TOTEM



CORPORATION



- **Huna Totem**
  - Pier & Trestle
  - Boardwalk
  - Train Depot
  - Bus Parking
- **City of Whittier**
  - Seawall & Boat Harbor
  - Waterfront Park
  - Ramp and Boat Parking
- **Native Corp Partners**
  - Cultural Center
  - Amphitheater
- **Forest Service**
  - Portage Trail Head
  - Campground
  - Learnard Glacier Trail
- **Private Partnerships**
  - Learnard Gondola
  - Iconic Lodge



**ORIGINAL HEAD OF THE BAY CONCEPT AS DISCUSSED IN 2022**

Several conceptual and process evolutions since:

- New Land acquired from USACE by City of Whittier enables Huna Totem port project to occupy a more compact site
- Focus of Huna Totem project is dock, welcome center, train platform, and related parking





-  Alaska Railroad Lease Land
-  Alaska Railroad Land
-  City of Whittier Land
-  Communication Building
-  DOT Airport Land
-  USFS Nature Preserve

Image © 2023 CNES / Airbus

Google Earth



**Huna Totem**  
DEVELOPMENT GROUP



**Turnagain**  
Marine Construction





**Huna Totem**  
DEVELOPMENT GROUP



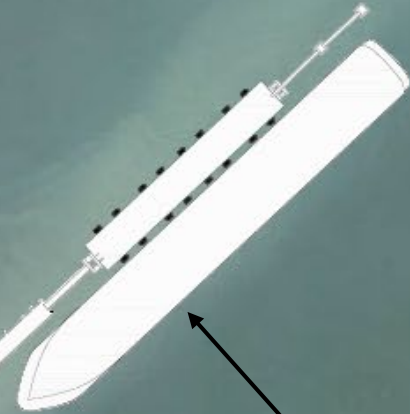
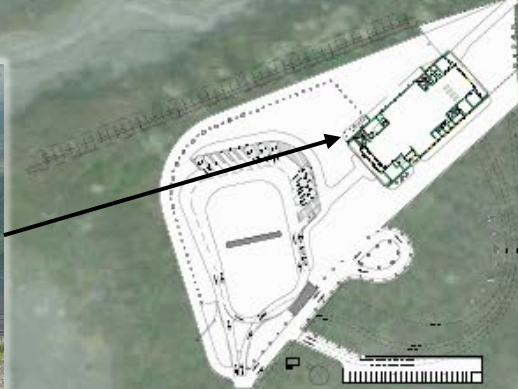
**Turnagain**  
Marine Construction



PHASE

1

Terminal Building  
& Bus Parking Lot



Huna Totem  
DEVELOPMENT GROUP



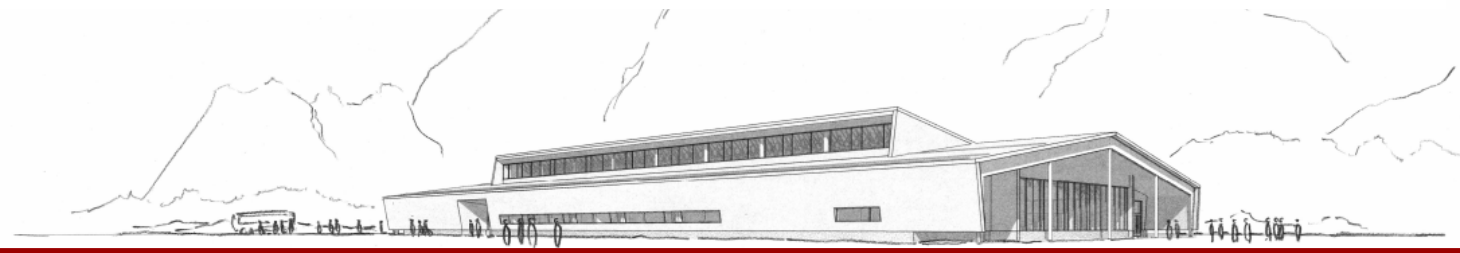
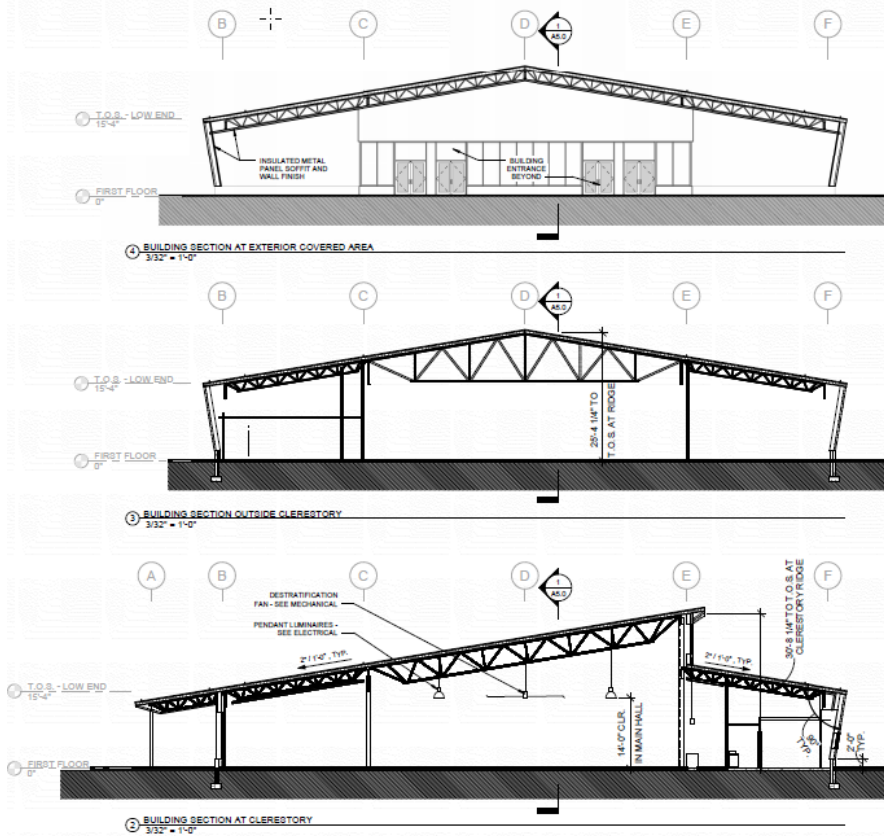
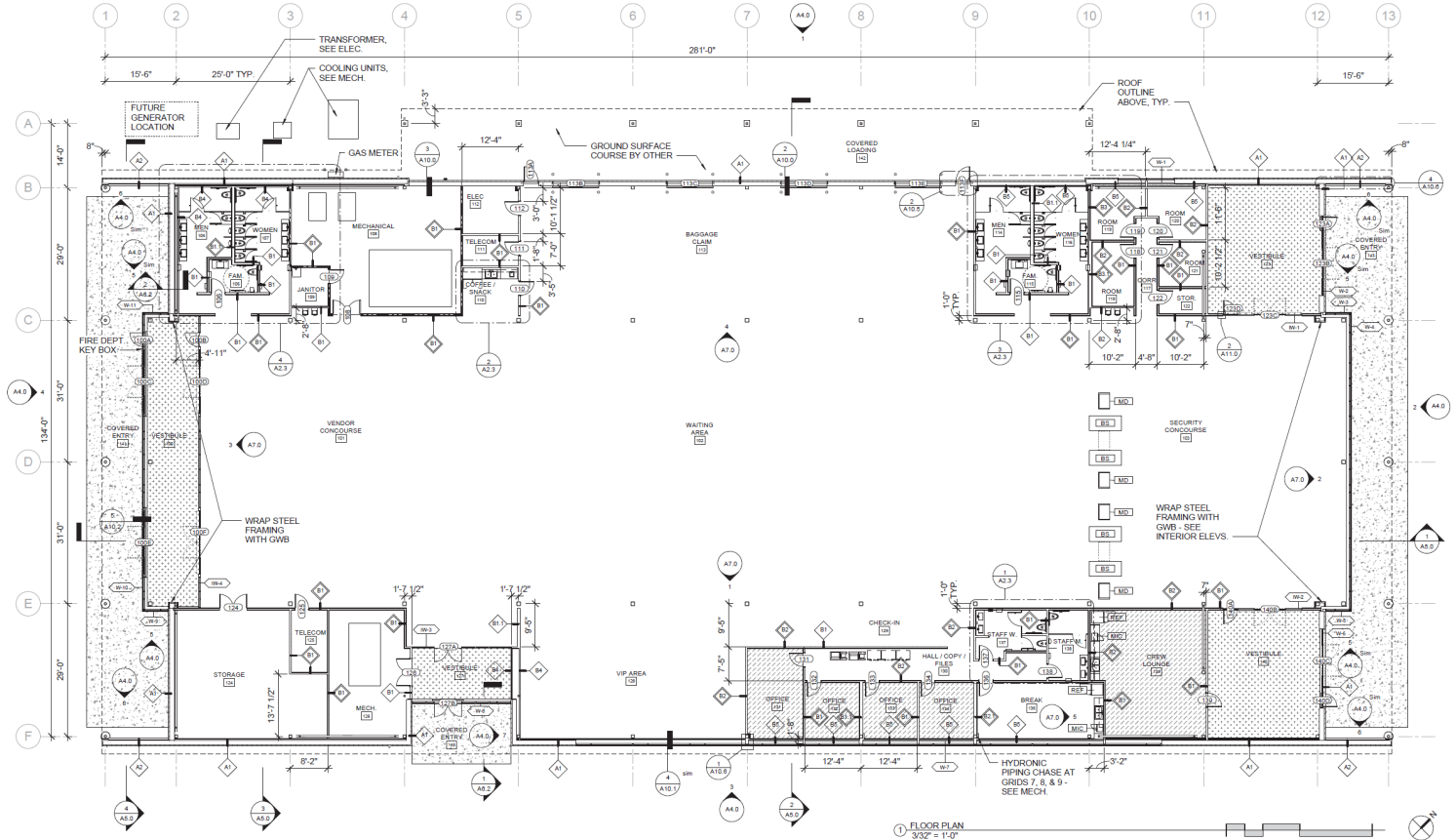
Turnagain  
Marine Construction





# PHASE 1

## Inside Layout Terminal Building



**Huna Totem**  
DEVELOPMENT GROUP

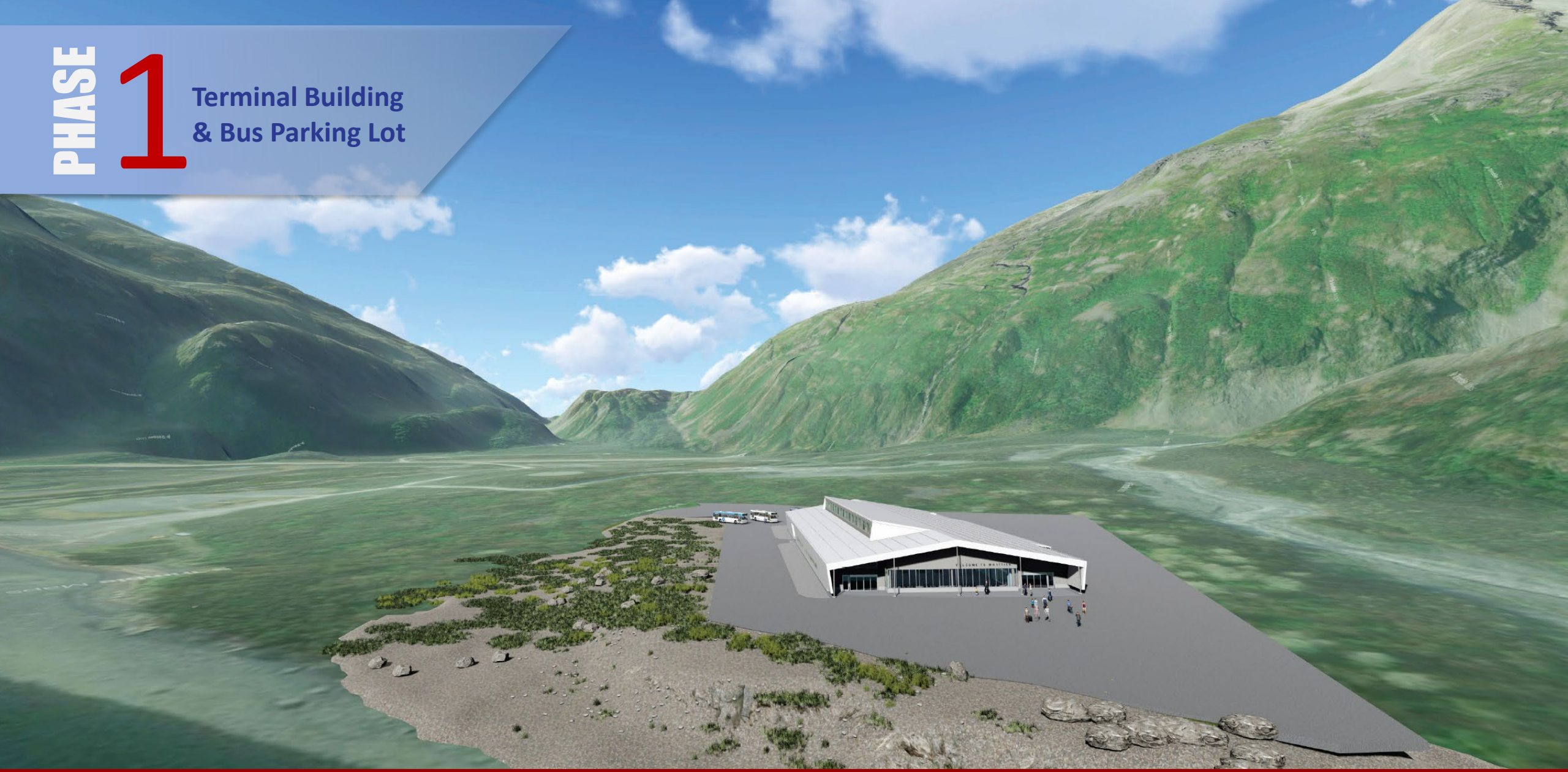


**Turnagain**  
Marine Construction

PHASE

1

Terminal Building  
& Bus Parking Lot



Huna Totem  
DEVELOPMENT GROUP



Turnagain  
Marine Construction

PHASE

1

Terminal Building  
& Bus Parking Lot



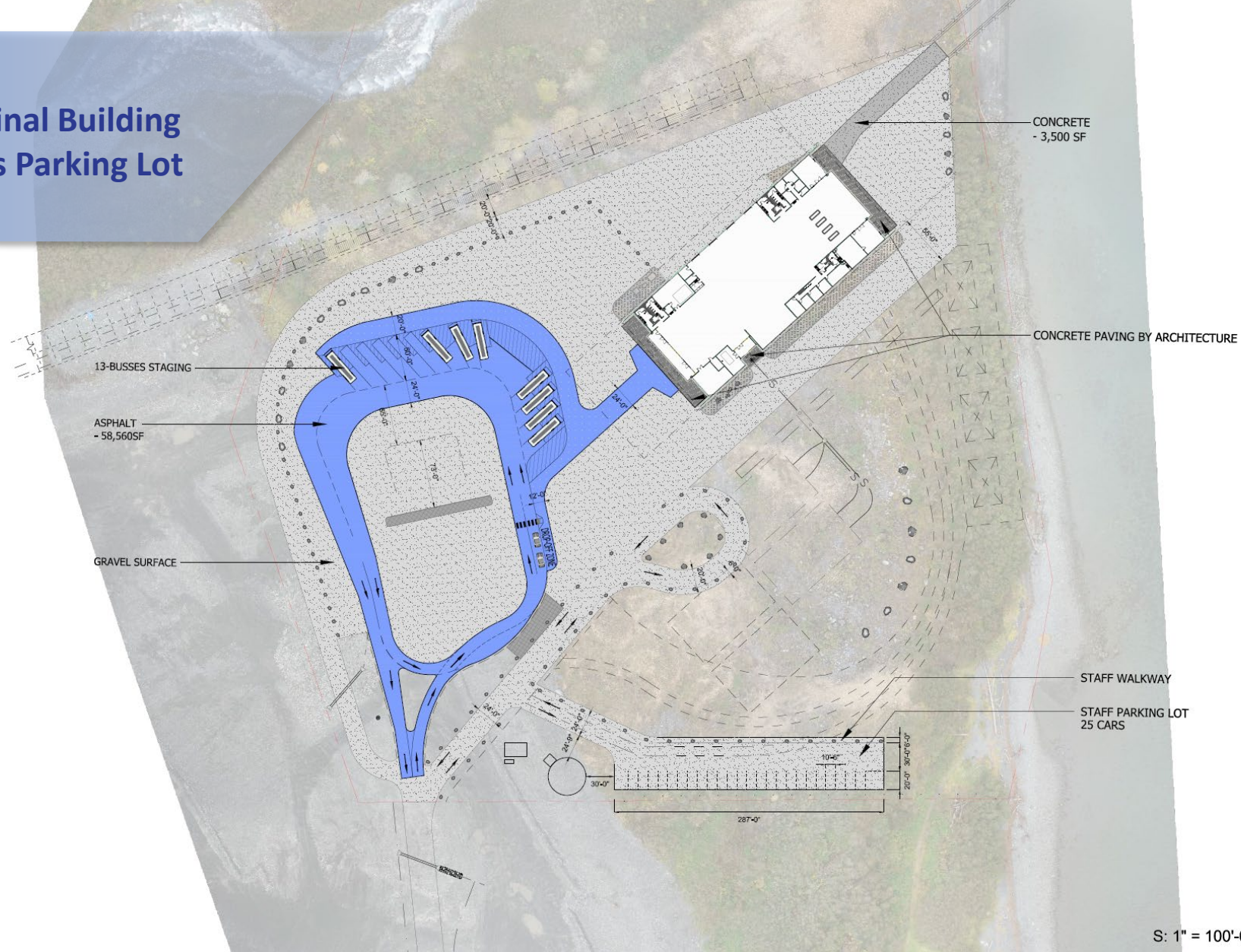
Huna Totem  
DEVELOPMENT GROUP



Turnagain  
Marine Construction

# PHASE 1

## Terminal Building & Bus Parking Lot



**Huna Totem**  
DEVELOPMENT GROUP



**Turnagain**  
Marine Construction

PHASE

1

Trestle  
& Capstans



Huna Totem  
DEVELOPMENT GROUP



Turnagain  
Marine Construction

PHASE

1

Primary Dock  
Float



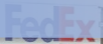
Huna Totem  
DEVELOPMENT GROUP



Turnagain  
Marine Construction

# PHASE 1

## Dock Pile Caps



Huna Totem  
DEVELOPMENT GROUP



Turnagain  
Marine Construction

# PHASE 1 Construction Timeline



MAY	JUN	JUL	AUG	SEP	OCT	NOV	DEC	JAN	FEB	MAR	APR	MAY
Submit Docs – Permitting	Start Building Erection	Surround Grade Work				Dock Complete	Sheetrock Work	Interior Painting			Terminal Complete	First Ship
Drive Pile for Trestle	Complete Install of Reaction Dolphins	Parking Lot Surface Grade					Christmas Break					
Site Grade	Septic											
2023								2024				



**Huna Totem**  
DEVELOPMENT GROUP



**Turnagain**  
Marine Construction



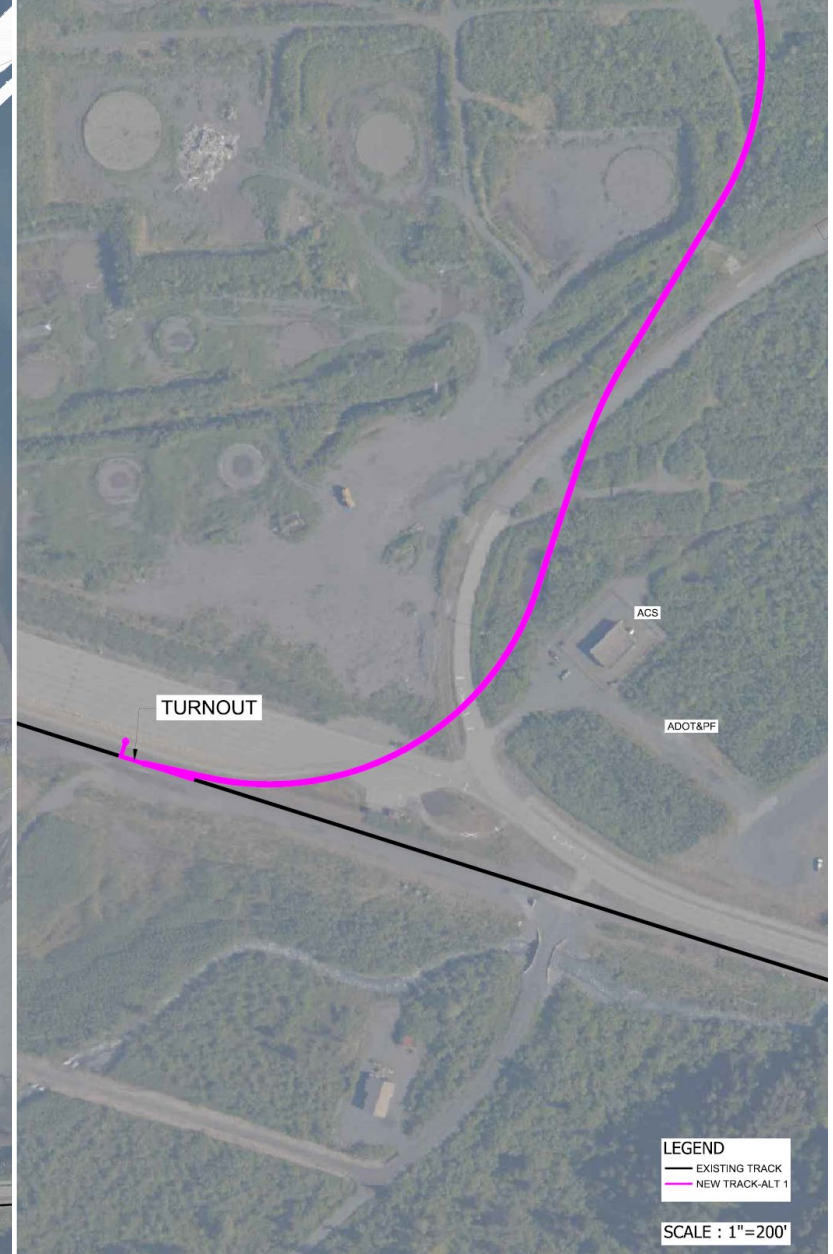
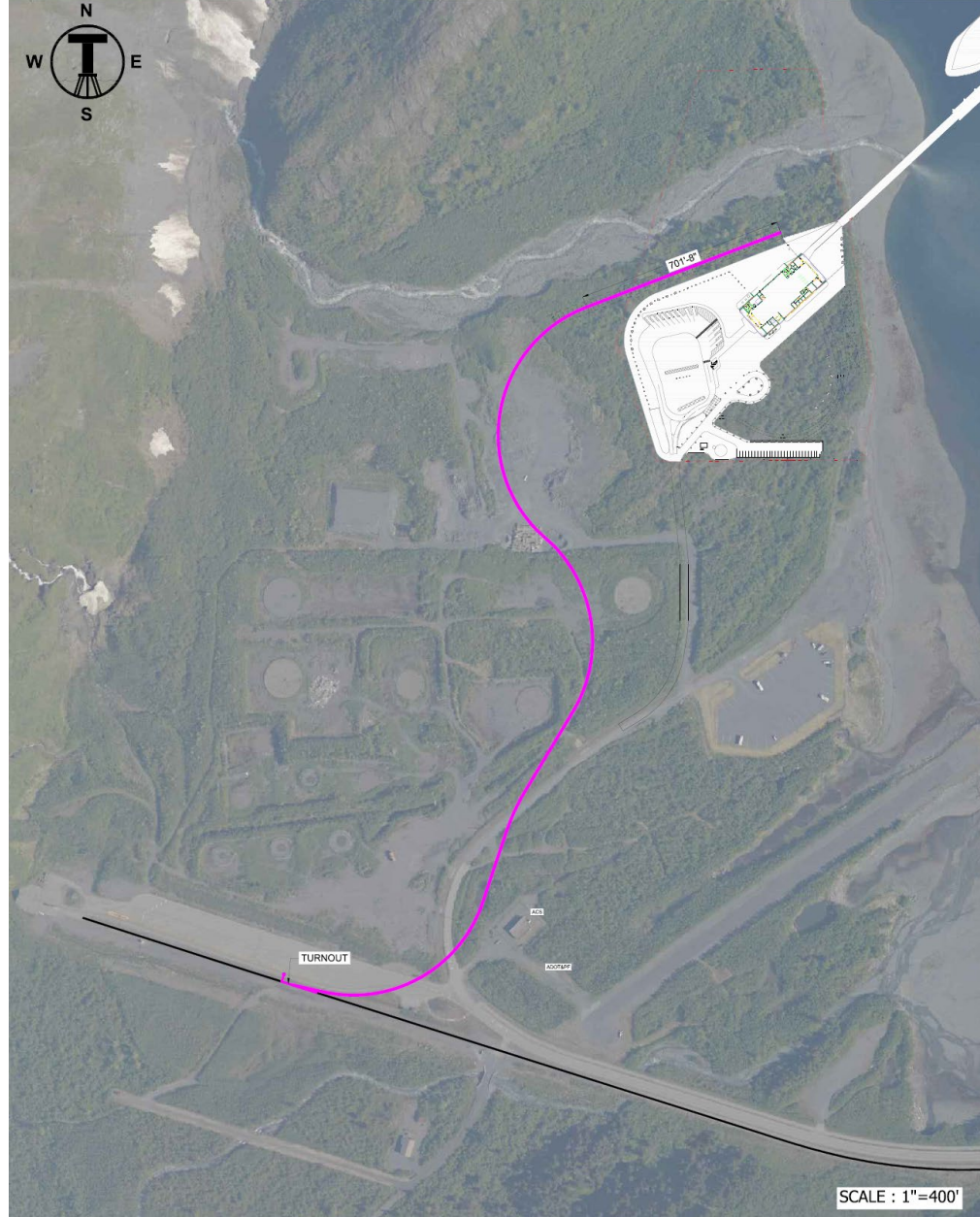
# OPTION 1

## Pros

- 1) \_\_\_\_\_
- 2) \_\_\_\_\_
- 3) \_\_\_\_\_
- 4) \_\_\_\_\_

## Cons

- 1) \_\_\_\_\_
- 2) \_\_\_\_\_
- 3) \_\_\_\_\_
- 4) \_\_\_\_\_



LEGEND  
— EXISTING TRACK  
— NEW TRACK-ALT 1

SCALE : 1"=200'



Huna Totem  
DEVELOPMENT GROUP



Turnagain  
Marine Construction

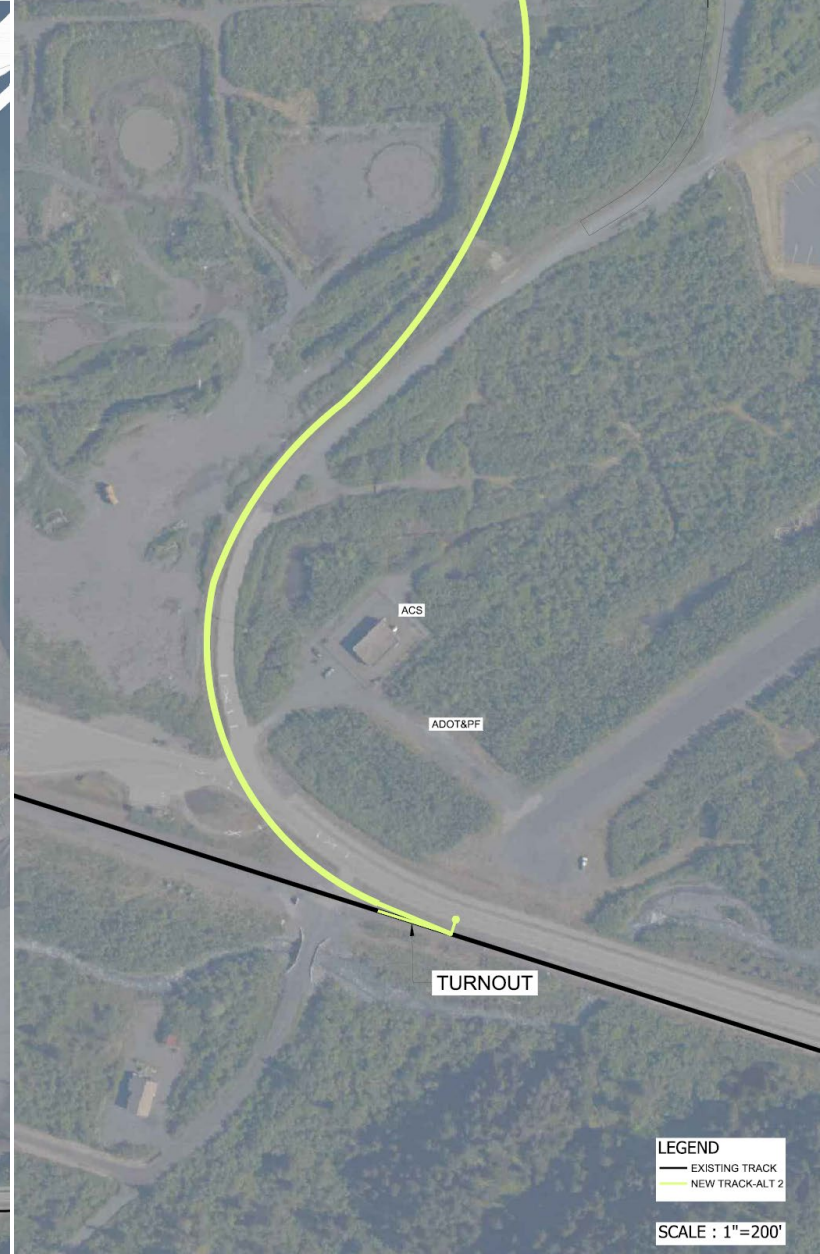
# OPTION 2

## Pros

- 1) \_\_\_\_\_
- 2) \_\_\_\_\_
- 3) \_\_\_\_\_
- 4) \_\_\_\_\_

## Cons

- 1) \_\_\_\_\_
- 2) \_\_\_\_\_
- 3) \_\_\_\_\_
- 4) \_\_\_\_\_

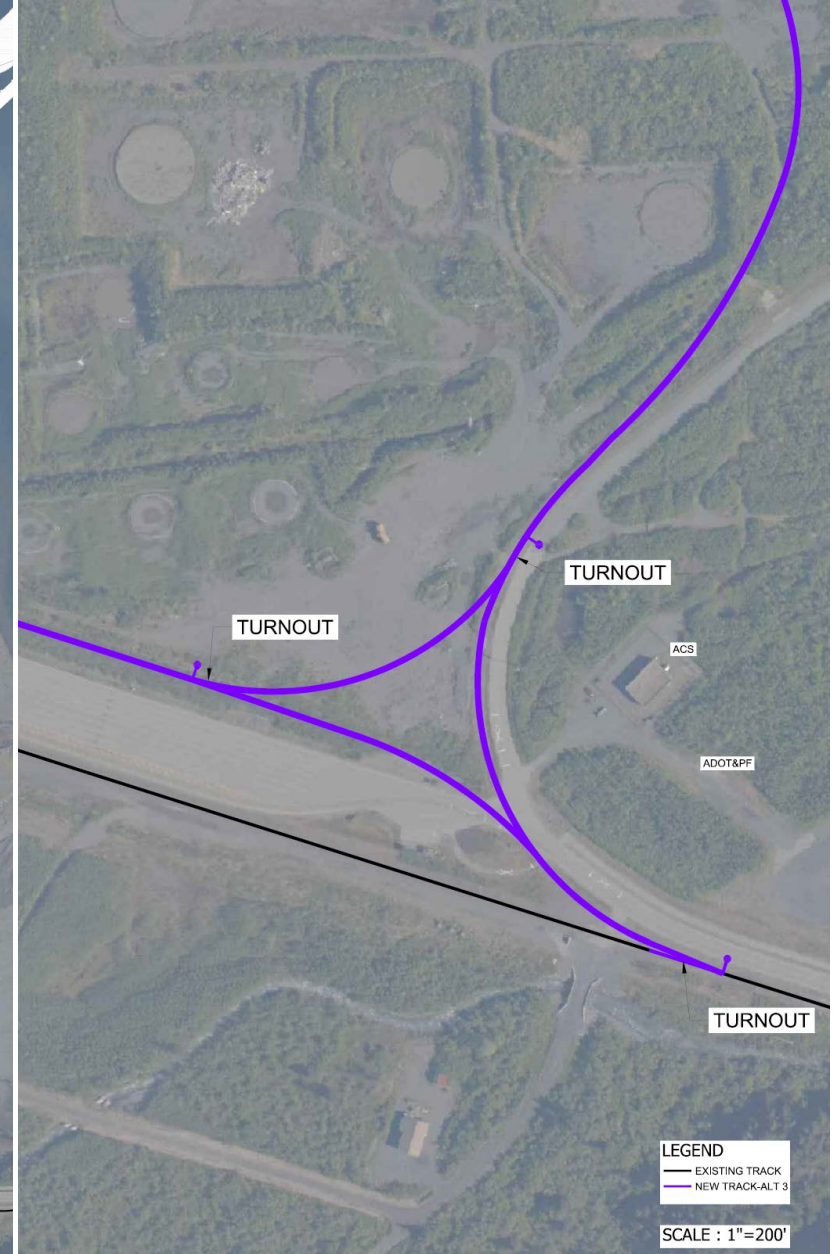


Huna Totem  
DEVELOPMENT GROUP



Turnagain  
Marine Construction

# OPTION 3



## Pros

- 1) \_\_\_\_\_
- 2) \_\_\_\_\_
- 3) \_\_\_\_\_
- 4) \_\_\_\_\_

## Cons

- 1) \_\_\_\_\_
- 2) \_\_\_\_\_
- 3) \_\_\_\_\_
- 4) \_\_\_\_\_



Huna Totem  
DEVELOPMENT GROUP



Turnagain  
Marine Construction

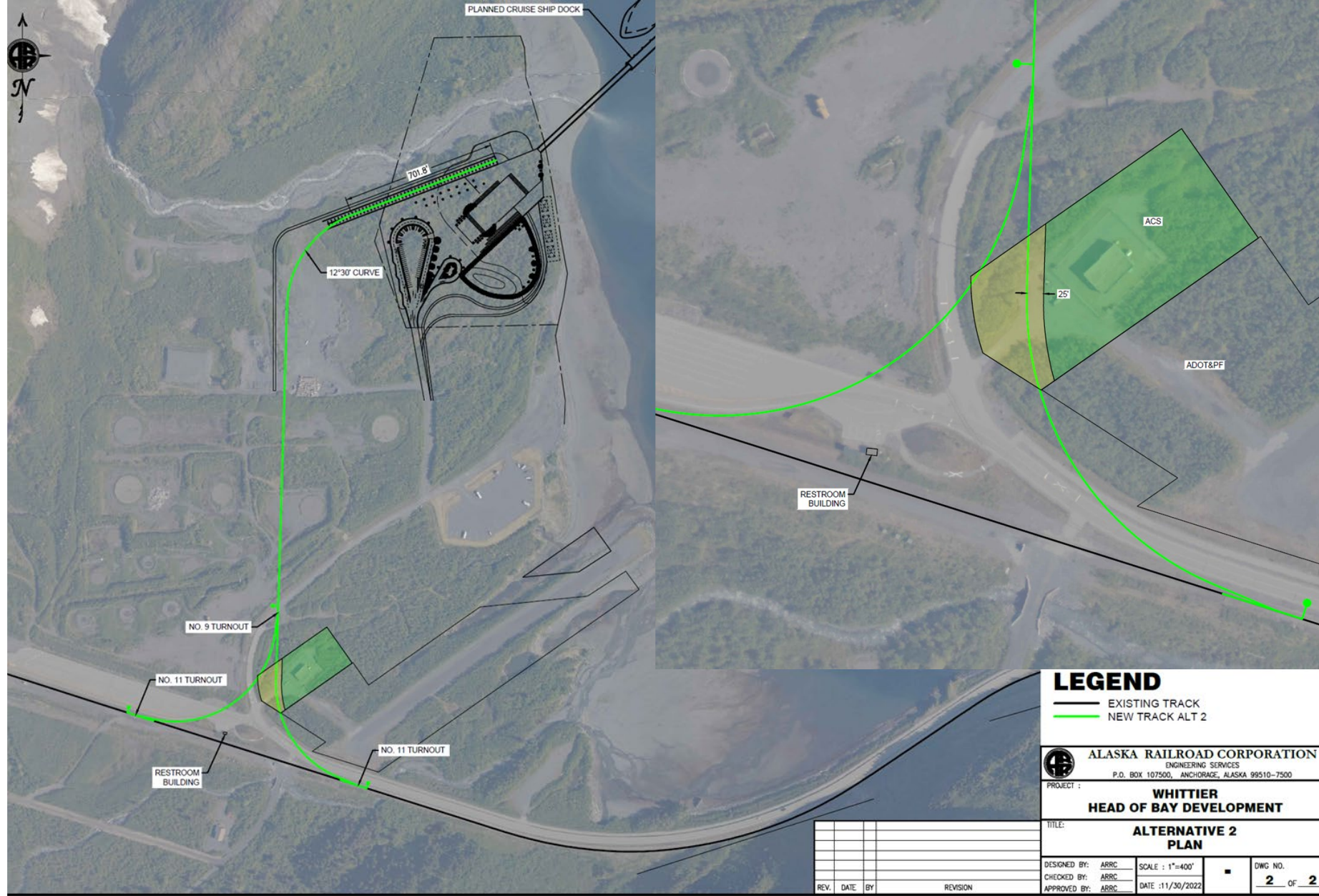
# OPTION 4

## Pros

- 1) \_\_\_\_\_
- 2) \_\_\_\_\_
- 3) \_\_\_\_\_
- 4) \_\_\_\_\_

## Cons

- 1) \_\_\_\_\_
- 2) \_\_\_\_\_
- 3) \_\_\_\_\_
- 4) \_\_\_\_\_



**LEGEND**  
 — EXISTING TRACK  
 — NEW TRACK ALT 2

**ALASKA RAILROAD CORPORATION**  
 ENGINEERING SERVICES  
 P.O. BOX 107500, ANCHORAGE, ALASKA 99510-7500

PROJECT : **WHITTIER HEAD OF BAY DEVELOPMENT**

TITLE: **ALTERNATIVE 2 PLAN**

DESIGNED BY: ARRC    SCALE : 1"=400'  
 CHECKED BY: ARRC    DATE : 11/30/2022    DWG NO. **2** OF **2**  
 APPROVED BY: ARRC

REV.	DATE	BY	REVISION



**Huna Totem**  
 DEVELOPMENT GROUP



**Turnagain**  
 Marine Construction



### The Ovoid

The Ovoid is the mother of Tlingit formline design. The shape is the building block that forms the visual center point from which all design patterns are created. From the Ovoid, all artwork develops and flows to establish movement and meaning.

[www.hunatotem.com](http://www.hunatotem.com)