



The Ovoid

The Ovoid is the mother of Tlingit formline design. The shape is the building block that forms the visual center point from which all design patterns are created. From the Ovoid, all artwork develops and flows to establish movement and meaning.



Introduction to Huna Totem Corporation



- Huna Totem is currently owned by over 1,500 shareholders with aboriginal ties to Glacier Bay National Park and the Village of Hoonah in Southeast Alaska.
- Mission is to advance the economic aspirations and culture of the Xuna Kaawu through business excellence, sustainable economic growth, leadership, and education.
- Owns over 23,000 acres of land around Icy Strait Point and the community of Hoonah.
- Huna Totem's flagship asset is Icy Strait Point, the United States' first private cruise ship port, one of Alaska's premier cruise ship destinations, and winner of Seatrade's Global Port of the Year Award in 2020.
- To date, Huna Totem has attracted over \$173M in investment for Icy Strait Point, with ship calls from every cruise line visiting Alaska.



HUNA TOTEM



CORPORATION

Hoonah, Alaska – Population 760

Economic Driver for Hoonah



HUNA TOTEM



CORPORATION

Hoonah, Alaska – Population 760

Icy Strait Point: Growth in Alaska Tourism



Purchase Historic Cannery

1996



First Dock Opens

2007



Seatrade Global Cruise Port of the Year

2019



Keet Plaza Dedication

2020



World's Largest ZipRider

2016



1000th Ship Call

2019



Alaska First High-Speed Gondola

2020



Wilderness Landing Opens

2021

ICY STRAIT
POINT
HOONAH, ALASKA



CORPORATION

Future



HUNA TOTEM CORPORATION

Partnerships with Relationships

- Direct Contacts Throughout the Organizations
- Right Relationship to Create Demand
- Proven Track Record for Success
- Channel to Launch New Products
- Developing Partnership with Newcomers
- No “Middleman”
- Turnkey from Development to Deployment



HUNA TOTEM



CORPORATION



Russell Dick
President and CEO
Huna Totem



(907) 723-9891



russell.dick@hunatotem.com



Tyler Hickman
Senior Vice President
Icy Strait Point



(907) 789-8601



tyler@icystraitpoint.com



Mickey Richardson
Director of Marketing
Huna Totem/Icy Strait Point



(907) 789-8604



mickey@hunatotem.com



Turnagain
Marine Construction

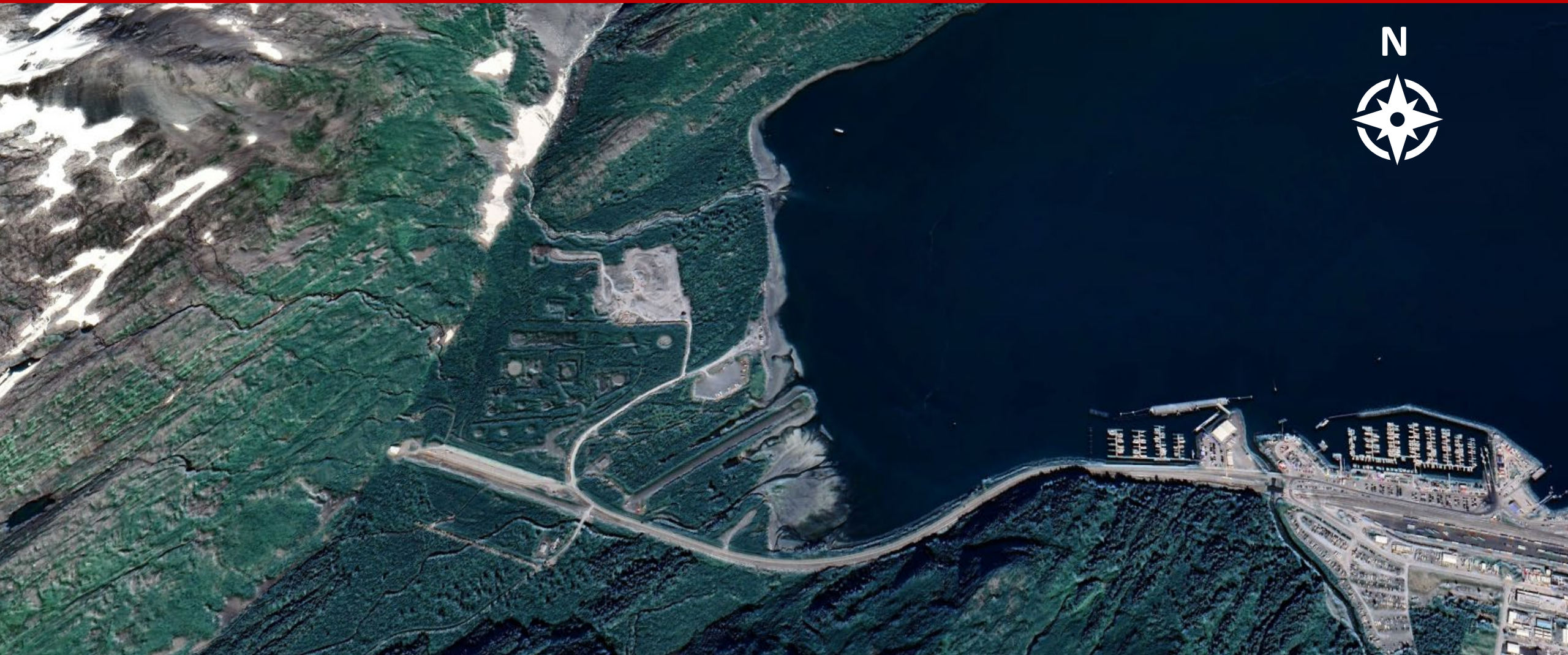


Jason Davis
President and CEO
Turnagain Marine



Josh Zellmer
Principle Engineer
Turnagain Marine





HUNA TOTEM



CORPORATION



Head of the Bay Concept



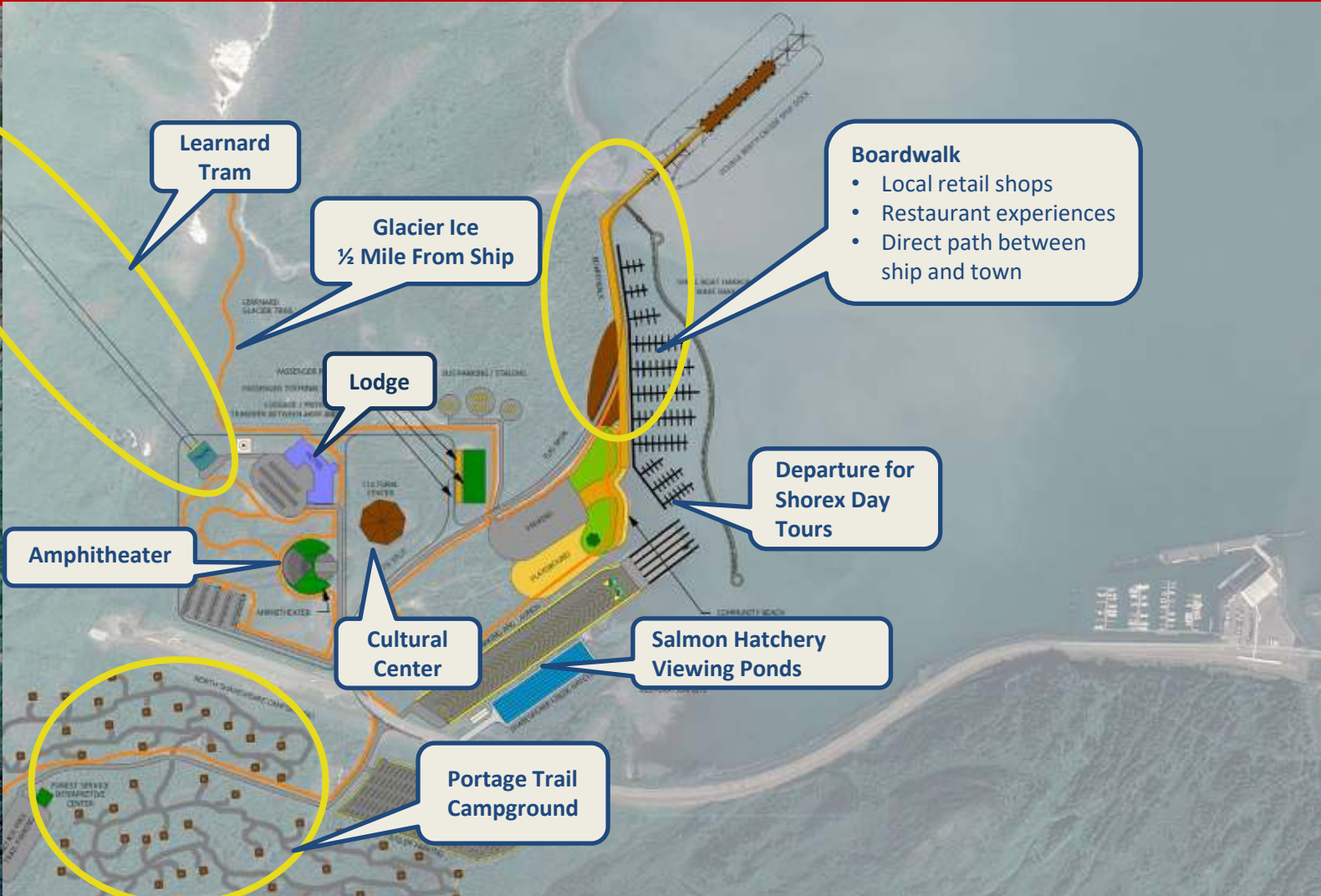
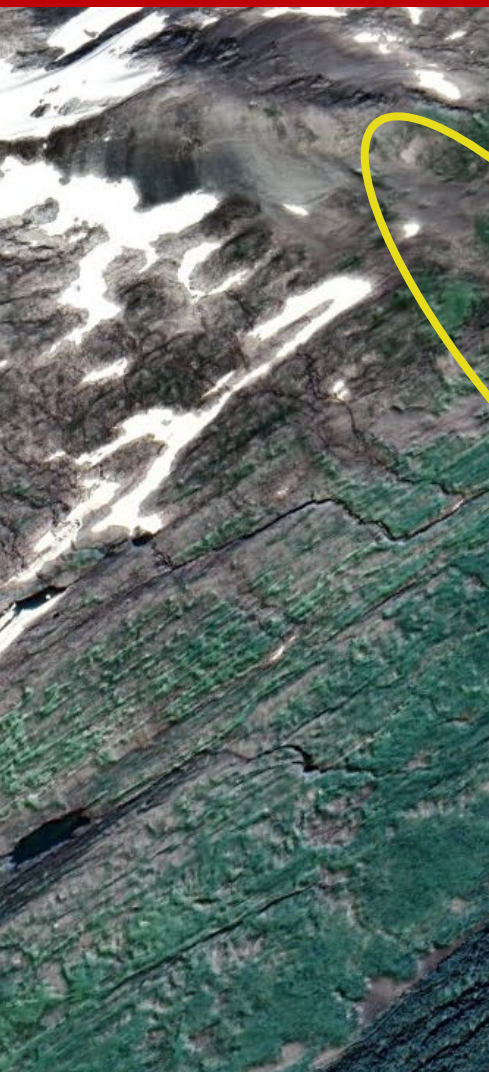
HUNA TOTEM



CORPORATION



Head of the Bay Concept – Local Attractions



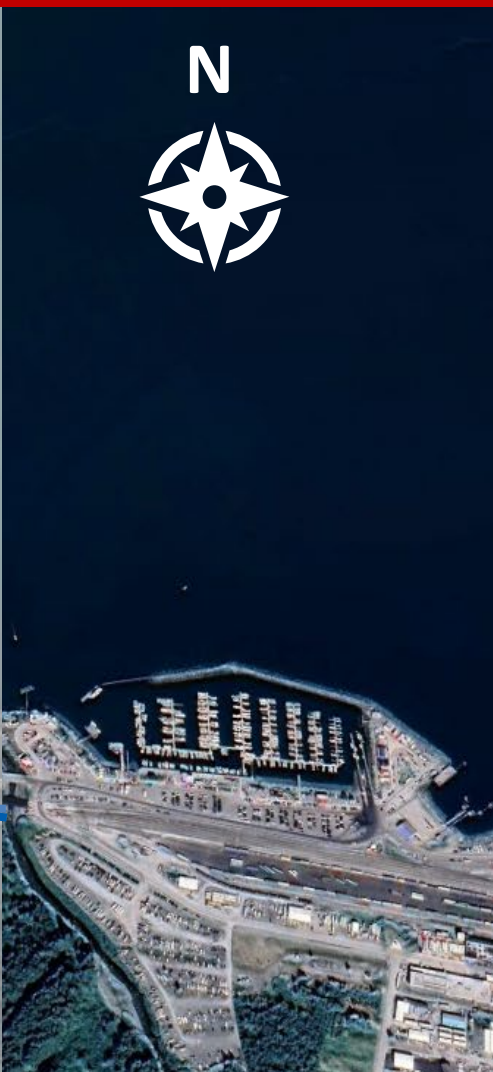
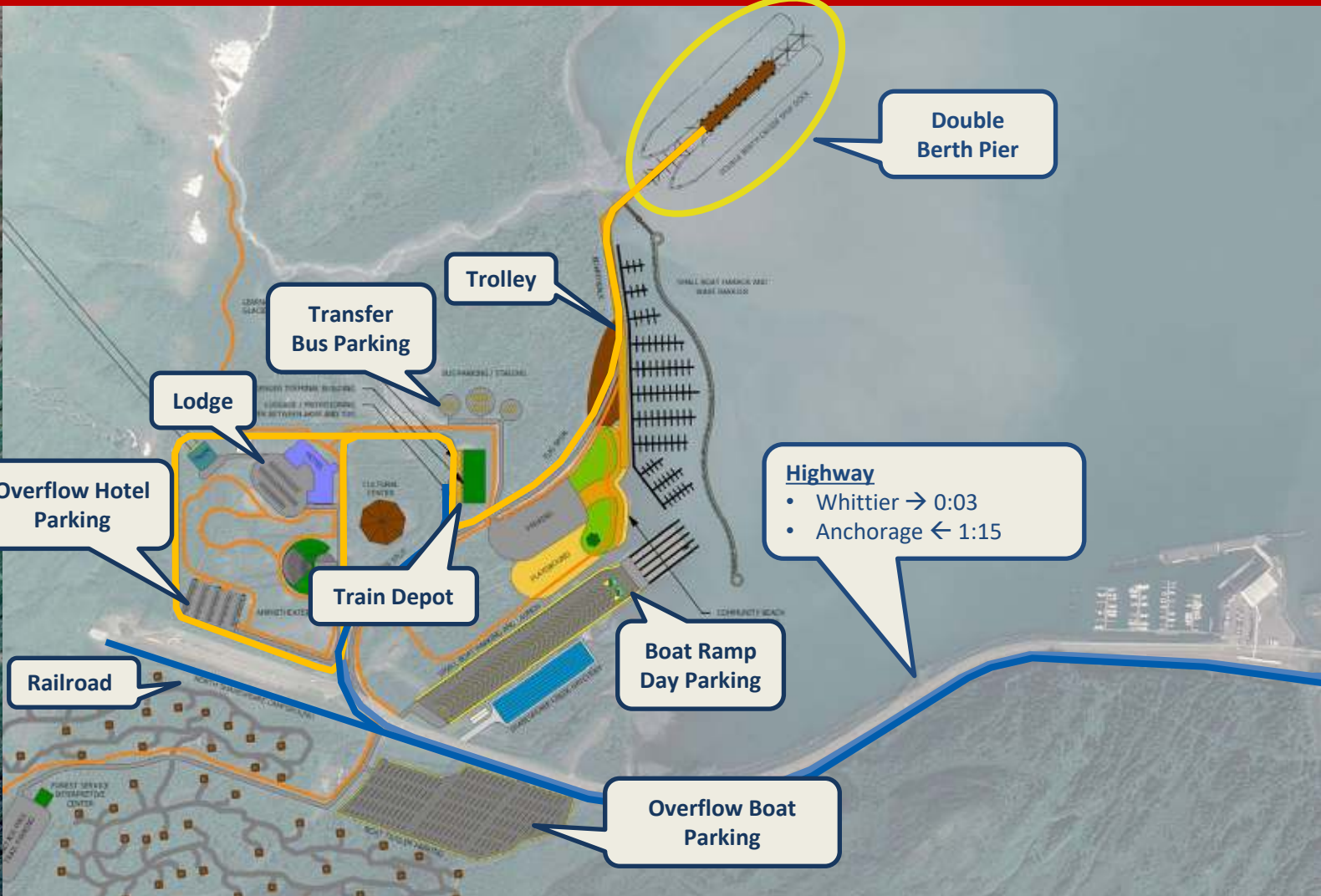
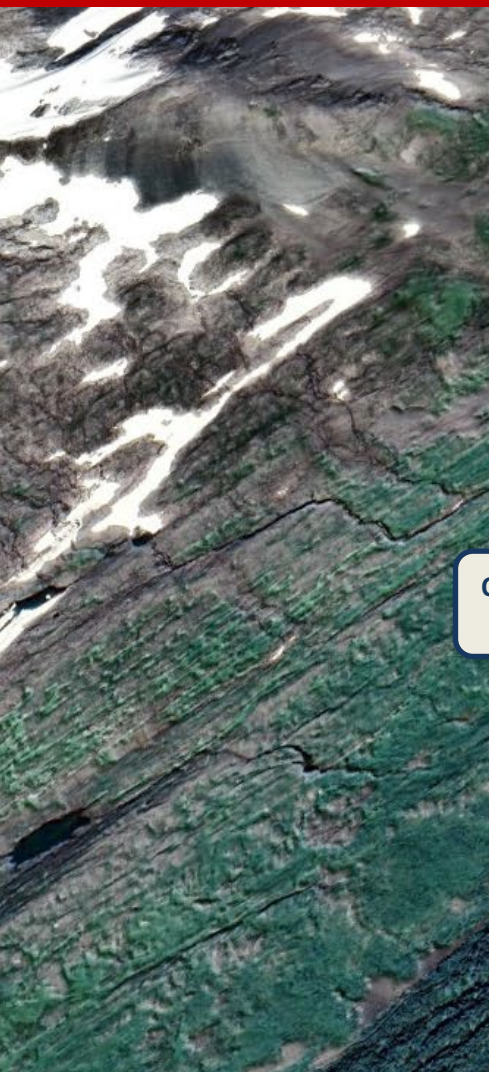
HUNA TOTEM



CORPORATION



Head of the Bay Concept – Connected to Transportation



HUNA TOTEM



CORPORATION



Whittier Comprehensive Plan 2020

- ✓ Whittier Ownership of Railroad Lands at the Head of the Bay
- ✓ Small Boat Harbor with Boat Ramp, Parking and Slips
- ✓ New Prince William Sound Museum Exhibit Space
- ✓ Space for a Whittier Visitor Center
- ✓ Increased Parks & Playgrounds for Youth, Community & Visitor
- ✓ Maintain the Unique Character of Whittier
- ✓ Improves & Expands Whittier's Trail System
- ✓ Create an Inner-City Shuttle System
- ✓ Expand Tour Operation Opportunities for the Community
- ✓ Create New, Long-Term Revenue Source for Whittier

Huna Totem Development Plan

ALL INCLUDED

PLUS

- ✓ Expands infrastructure for expanding lodging and housing
- ✓ Integrates a City-Owed Campground
- ✓ Increase Visitor Attractions Making Whittier an Alaskan Destination
- ✓ Platform for Locals to Own & Operate Retail Store Fronts

HUNA TOTEM



CORPORATION

"Our vision for Whittier includes preserving our unspoiled environment, while improving amenities for all those who live and visit here. We see a Whittier with full-time access and ample, first-rate facilities to attract visitors and improve the quality of life for residents of all ages. We see a beautiful, clean Whittier with a self-sufficient economy and opportunity for local ownership of land, homes, and businesses."



HUNA TOTEM



CORPORATION



View Across Small Boat Harbor



HUNA TOTEM



CORPORATION



The Boardwalk and Seawall



HUNA TOTEM



CORPORATION



Train Depot & Community Building



HUNA TOTEM



CORPORATION



Inside the Train Depot & Community Building



HUNA TOTEM



CORPORATION



Opportunity In Development For Whittier

Small Boat Harbor Development and Rentals
Boat Ramp Operations and Fees
Boat Parking Rentals Lot
Seawall Development
Campground Development and Space Rental
Boardwalk Retail & Housing Space Rental
Ownership of Train Depot / Multi-Use Building

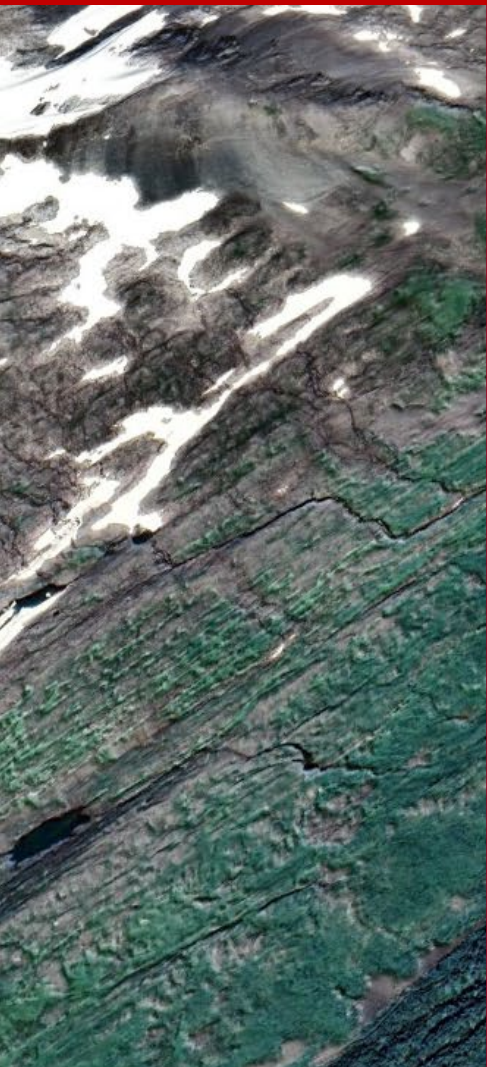
Huna Totem Development Operations

Long-Term Cruise Passenger Guarantee
Cruise Dock and Ship Porting Infrastructure
Seaside Boardwalk
Bus Turnaround & Parking
Long-Term Land & Tideland Lease
Large Cruise Ship Dock Operations
Head of the Bay Development Plan

HUNA TOTEM



CORPORATION



- **Huna Totem**
 - Pier & Trestle
 - Boardwalk
 - Train Depot
 - Bus Parking
- **City of Whittier**
 - Seawall & Boat Harbor
 - Waterfront Park
 - Ramp and Boat Parking
- **Native Corp Partners**
 - Cultural Center
 - Amphitheater
- **Forest Service**
 - Portage Trail Head
 - Campground
 - Learnard Glacier Trail
- **Private Partnerships**
 - Learnard Gondola
 - Iconic Lodge



HUNA TOTEM



CORPORATION



The City of Whittier will more than double Head-Tax revenue, generating \$5 per passenger embarking & debarking:

\$2,487,440 million

Using 2023 Visitor Numbers

\$674,320

Current Taxable
Headcount
Revenue*

497,488

Total Taxable
Headcount
with Expansion

65

Total Number of
Direct Jobs
Created by the
Port



Huna Totem

DEVELOPMENT GROUP

HUNA TOTEM



CORPORATION





Introduction Reducing Environmental Impact Selling Safely Empowering People **Strengthening our Communities** Operating with Integrity and Accountability Appendix



COVID-19 RELIEF AND RECOVERY

ALASKA SUPPORT

In May 2021, we provided \$10 million of cash support to six Alaska port communities severely impacted by the ongoing cruise voyage suspension, including Juneau, Ketchikan, Skagway, Hoonah, Seward and Sitka. Sixty percent of all tourism in Alaska is generated through cruise, which has been halted for more than a year, continuing to significantly impact small businesses reliant on cruise tourism. In addition, as part of the recently announced BuyAlaska and Voyij.com initiative, we joined the 'Shop Local Alaska' program and are encouraging people to help support Alaska small businesses devastated by the halt in cruising.



CRUISE LONGSHOREMEN

In April 2021, we donated \$100,000 in Visa gift cards to help support the cruise members of the International Longshoremen's Association Local 1416 which saw 60% of their business wiped out nearly overnight due to the pandemic. The International Longshoremen's Association Local 1416 has provided Long Shore Labor (also known as Longshoremen) for the Miami-Dade County PortMiami for over 85 years. Longshoremen load and unload trains and ships from all over the world, including freighters and cruise ships. Local 1416 is a pillar of the local community, providing middle-class jobs and holding a historic position as the oldest Black union in Florida.

HUMANITARIAN RELIEF

Since the global suspension of cruising began in March 2020, we have worked to work with organizations around the world to provide much needed relief including over \$2 million of in-kind donations to date. Some of our relief efforts during this period included:

- Approximately \$1.2 million in nonperishable food and water to benefit Feeding America's local Miami food bank [Feeding South Florida](#)
- Provided nearly \$275,000 of in-kind donations in the form of perishable and canned goods, to support two community relief efforts in the Archipelago of San Andrés in Colombia and Category 5 Hurricane Iota.
- More than \$225,000 in dry goods and foods to benefit communities impacted by the COVID-19 pandemic.
- Provided 16 truckloads of JUST® Water to benefit 17 Feeding America and other nonprofit organizations in the U.S. located in areas impacted by storms in partnership with [JUST® Goods, Inc.](#) and [The Willamette Valley Food Bank](#)
- Over \$30,000 of in-kind donations including 10 pallets of resupply kits and 300 cartons of JUST® Water to benefit the [Southeast Alaska Food Bank](#)



HUNA TOTEM



CORPORATION

